

59 BELLEVUE TERRACE, FREMANTLE
a small timber framed project

AT+M 202
Curtin University
25.09.15

TODAY'S LECTURE:

PART 1 (60 minutes)

INTRODUCTION (timber framed buildings)

BELLEVUE TERRACE (a particular timber framed building)

STUDENT TASK (10 minutes)

BREAK (15 minutes)

PART 2 (45 minutes)

TASK DISCUSSION

BELLEVUE TERRACE (construction, completion, occupation)

WHY TIMBER FRAMED CONSTRUCTION?

Reasons for building out of timber can be varied:

Cultural

Climatic

Geographical (supply / availability)

Client-based

Environmental (sustainability)

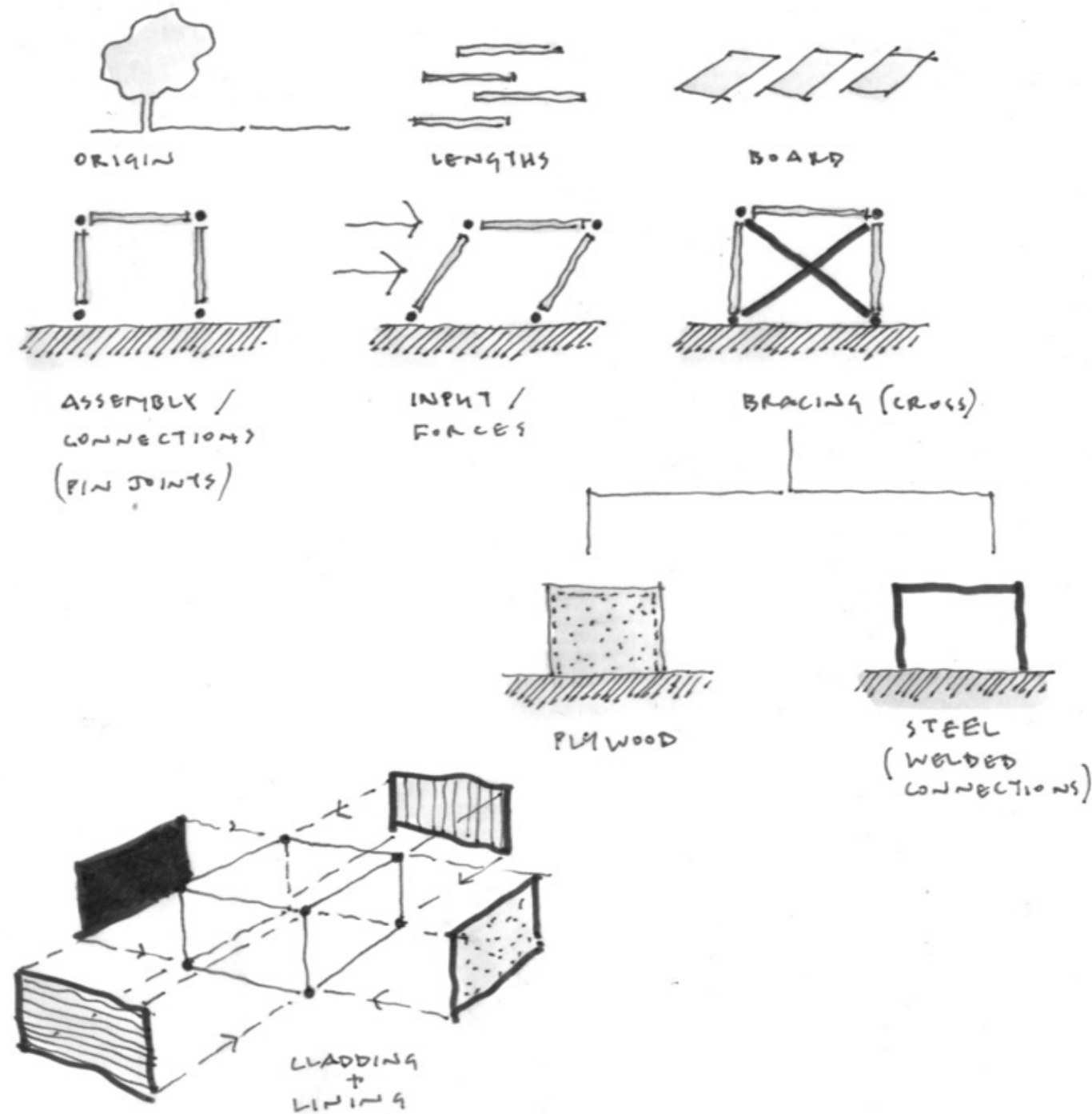
Economic

Industry-related

Design-related

etc.

WHAT IS TIMBER FRAMED CONSTRUCTION?





IN WESTERN AUSTRALIA

- BRICK + TILE construction predominates since foundation
- Timber is relegated to ROOF + VERANDAH construction
- Trades + Builders are defined by this history
- Trade Scope varies nationally
- Carpenters in QLD build whole houses; in WA they don't
- Timber framed construction increasing
- Shortage of good brick layers since advent of "render"
- Cheapest form of construction arguably still "rendered brick"
- Public perception



AT 59 BELLEVUE TERRACE

Did not commence as a timber framed building, or brick or concrete building.
The construction method developed in the course of the project.

Contributing factors were:

Heritage (Burra Charter calls for distinction)

Briefed typology: "Enclosed Verandah" (traditionally timber)

Climate (west facing)

Cost (low)

Builder (trade origin)

59 BELLEVUE TERRACE

However, 59 Bellevue Terrace is not solely a timber building. Few are in WA.

So, this is a discussion about:

Timber in Relationship with other Materials

Timber as one of many Instruments

In a journey of approximately two years

Primarily a discussion about a particular building...

Quote by Steven Holl:

“architecture inserted into existing situation may not strive to replicate or to achieve autonomy via contrast. Meshing of site and situation, an integrally conceived new architecture yields a third condition; a new interrelation, a new “place” is formed...”

Phenomena and Idea, Steven Holl, GA Architect 11, Tokyo, 1993

For me, this quote talks about a certain chemistry; a reaction:

The existing conditions of site and situation are combined with the architect's aspirations for the project and the result is something that wasn't there before.. something unanticipated even by the architect: a new interpretation or lens offering the occupants a way of interacting with their environment that wasn't possible before.

Steven Holl calls this the formation of a new “place”. You could also call it a new platform or armature that gives a new perspective or reinforces a particular old one. Above all, it's an outcome of ‘intention’ and ‘surprise’.

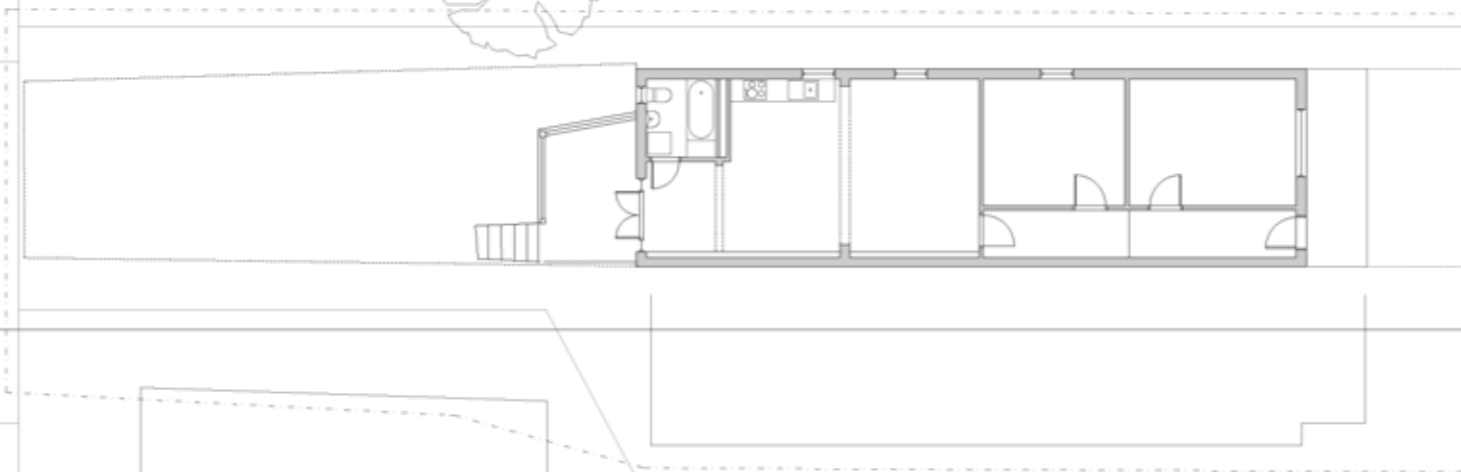
No project is ever the same. No relationship is either....And architecture ultimately consists of a series of relationships.

THE SITUATION

an 1890's semi-detached cottage

a bathroom + pergola of the 1980's

a cellar, kitchen + reconfigured living of the 2000's



BELLEVUE TCE



THE CLIENT BRIEF

1. re-define the relationship to the outside
2. create a new bathroom (to replace existing)
3. create an outdoor dining space (to replace pergola)
4. improve garden access
5. increase privacy (to address curious neighbours)
6. limit \$\$\$ (constrained budget)

THE SITE

TO CONNECT WITH THE LANDSCAPE



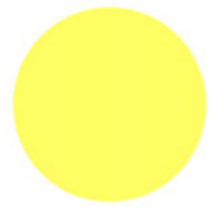


AND WITH THE GARDEN



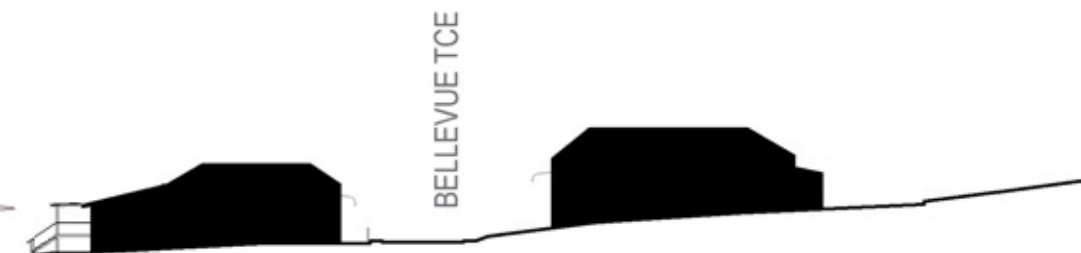


prevailing breezes / gales



western exposure

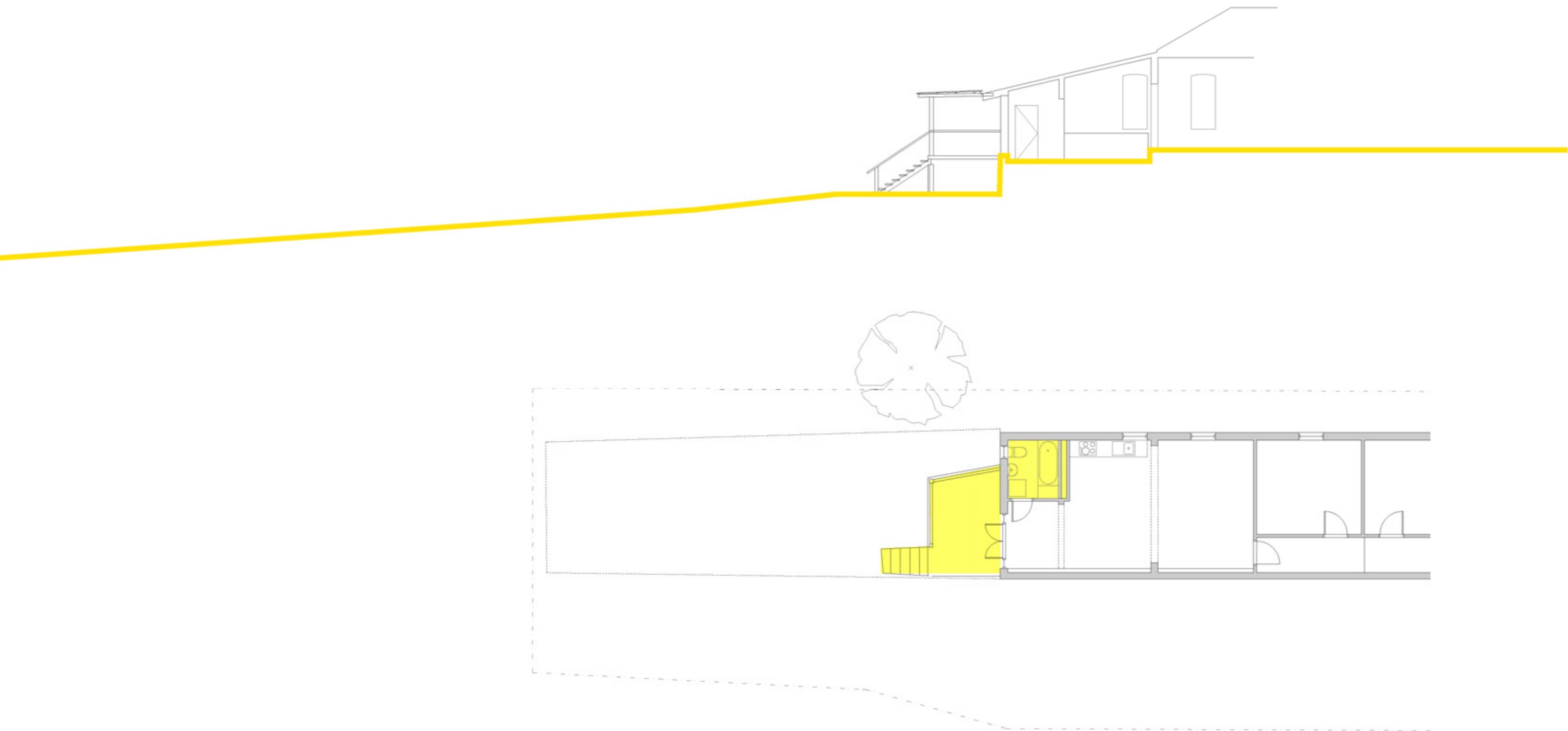
aspect / expanse



THE OBSTACLES

1.5m level difference between inside and outside.

Physical barriers between inside and outside.





THE APPROACH

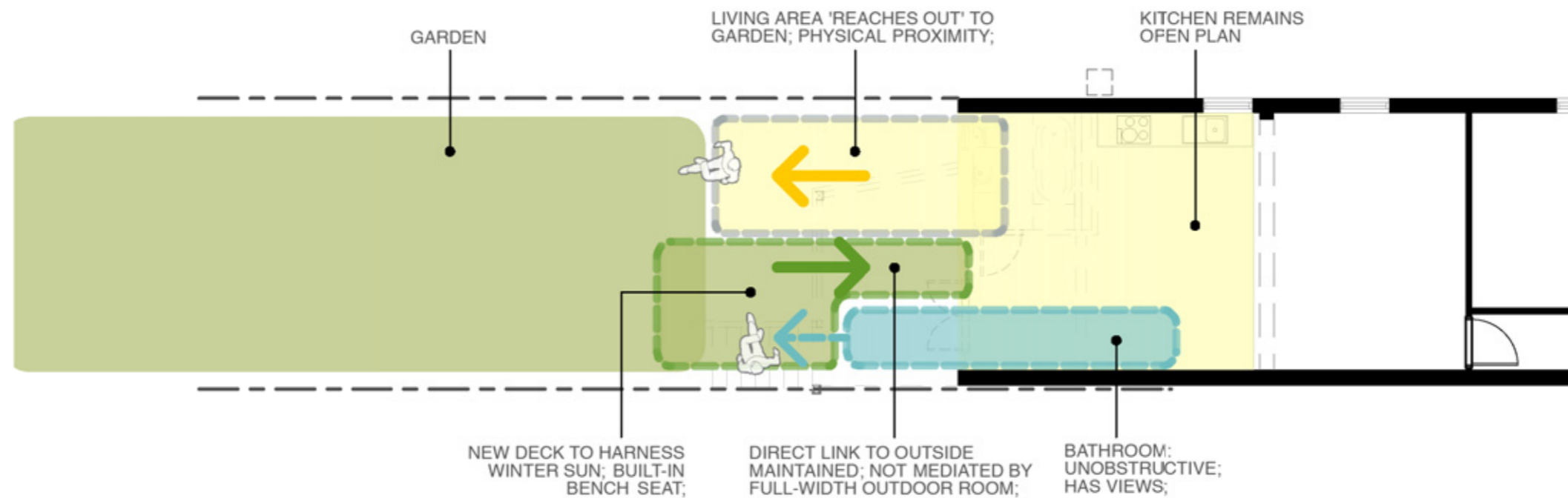
1. remove the barriers
2. insert a series of new components to address briefed requirements
3. wrap those components in a flexible skin that allows the clients to tailor their response to a changing conditions.

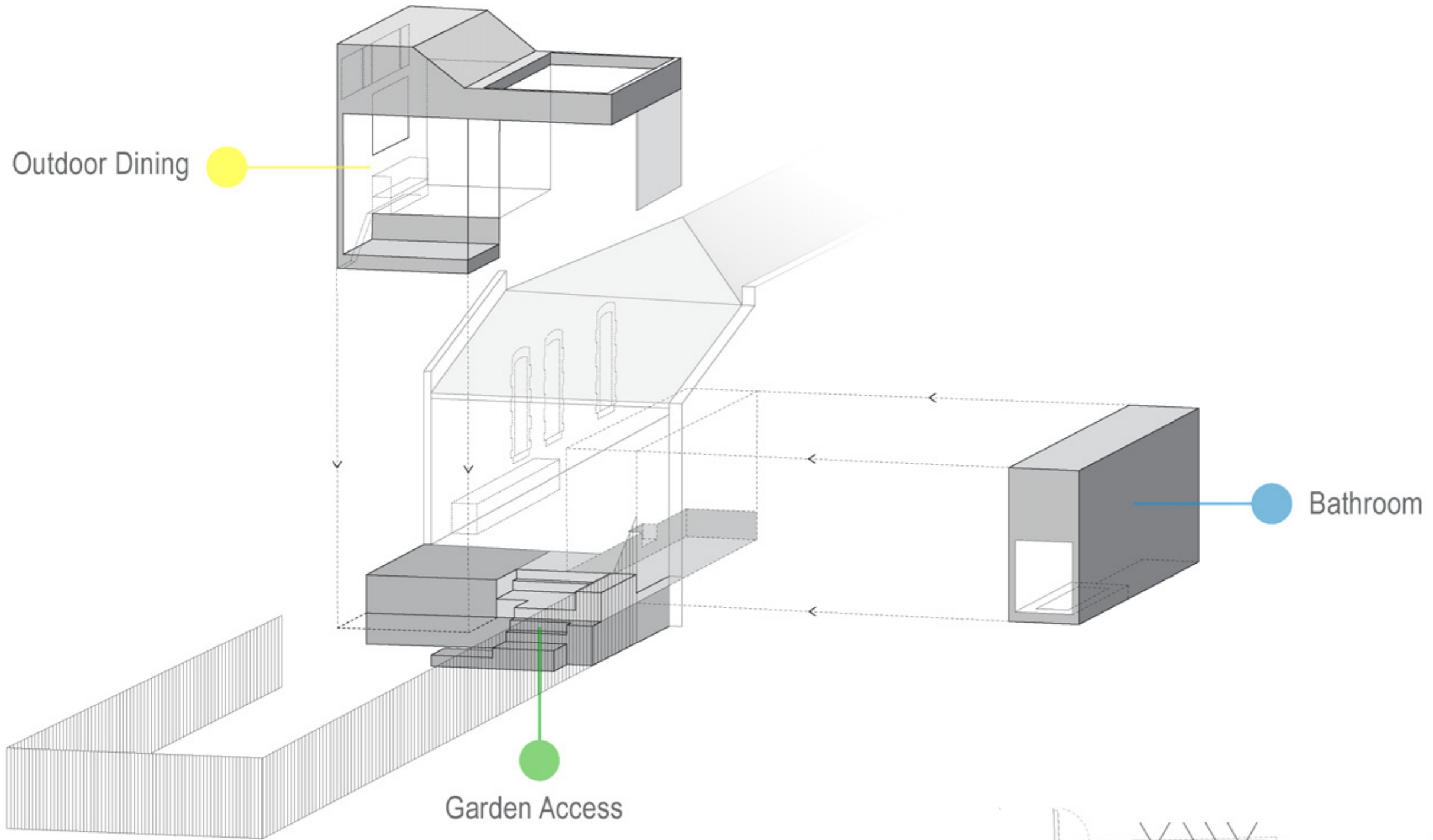
1. REMOVE THE BARRIERS



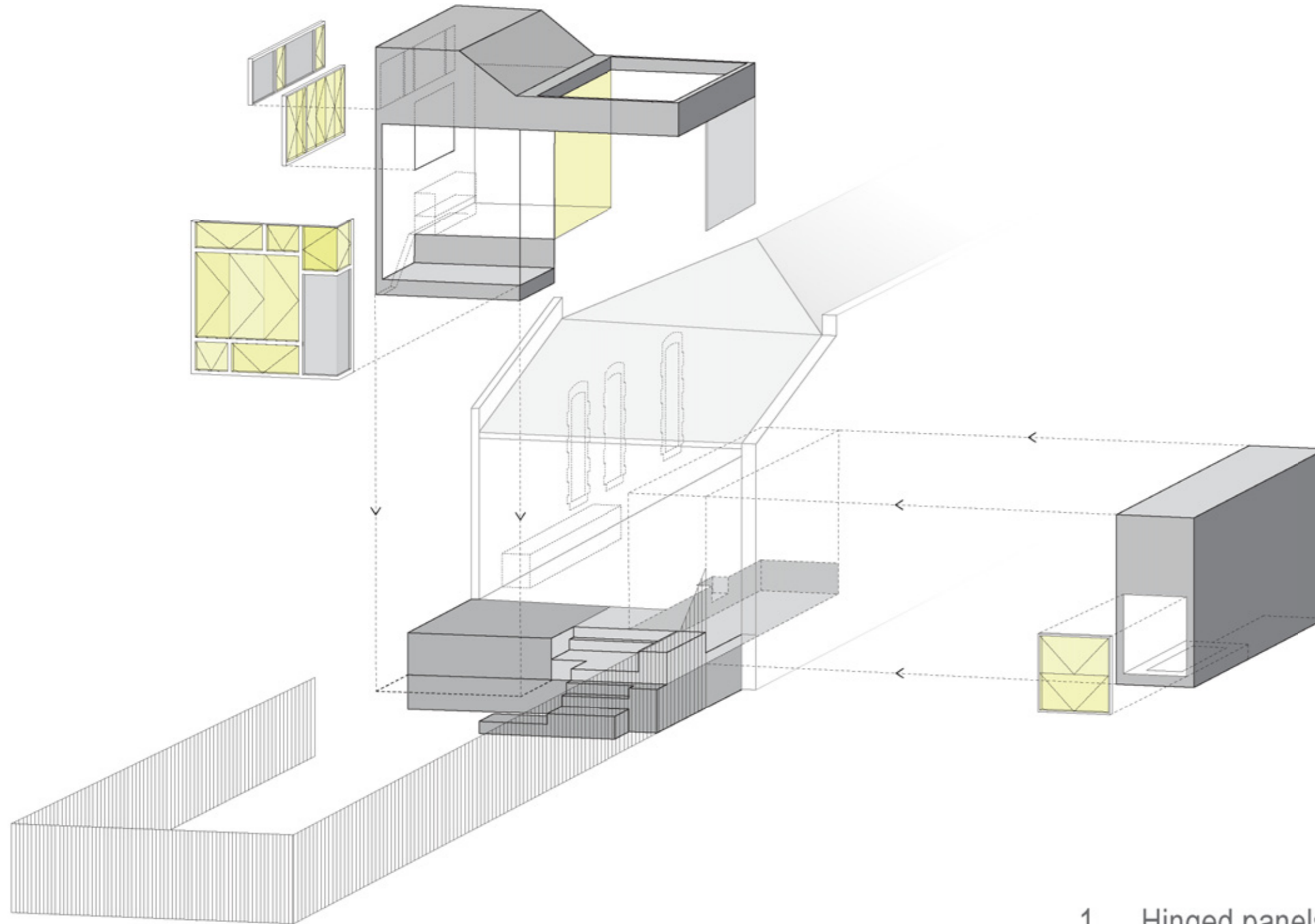
2. INSERT NEW COMPONENTS

- A. create an adaptable space that can support a variety of configurations
- B. mediate the need for direct garden access and desire for immediacy of view;
- C. provide diverse places to sit to suit the seasons;
- D. bathroom: unobstructive yet dignified space with view to garden;
- E. layering of space and light;





3. WRAP COMPONENTS IN A FLEXIBLE + RESPONSIVE SKIN



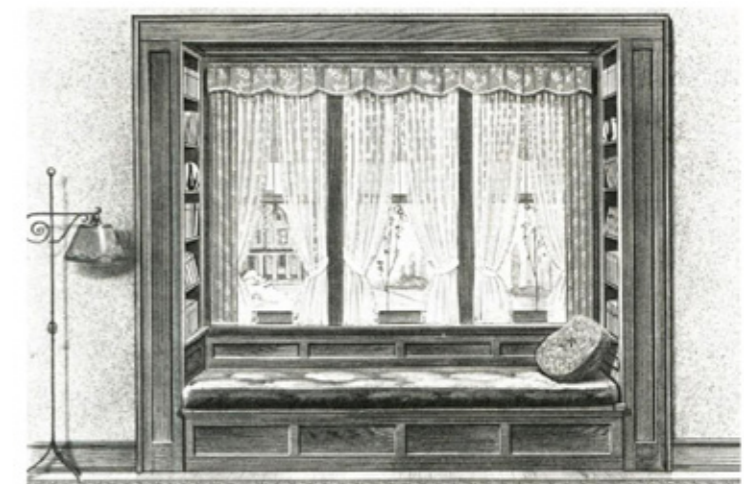
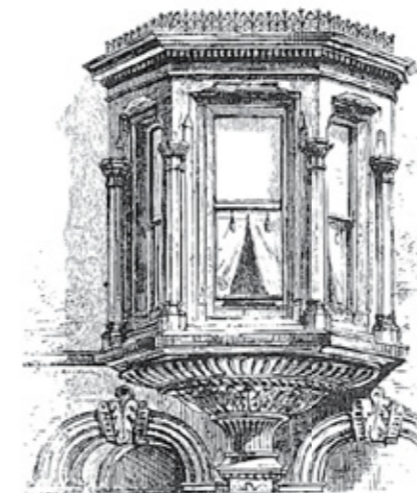
1. Hinged panels to direct views, breeze, privacy and sun.
2. Sliding walls to screen and allow spaces to merge.
3. Fixed glass to perennially frame certain views (sky + garden)
4. Ability to shut down and shield from weather extremes.

SUMMARY OF DESIGN INTENT

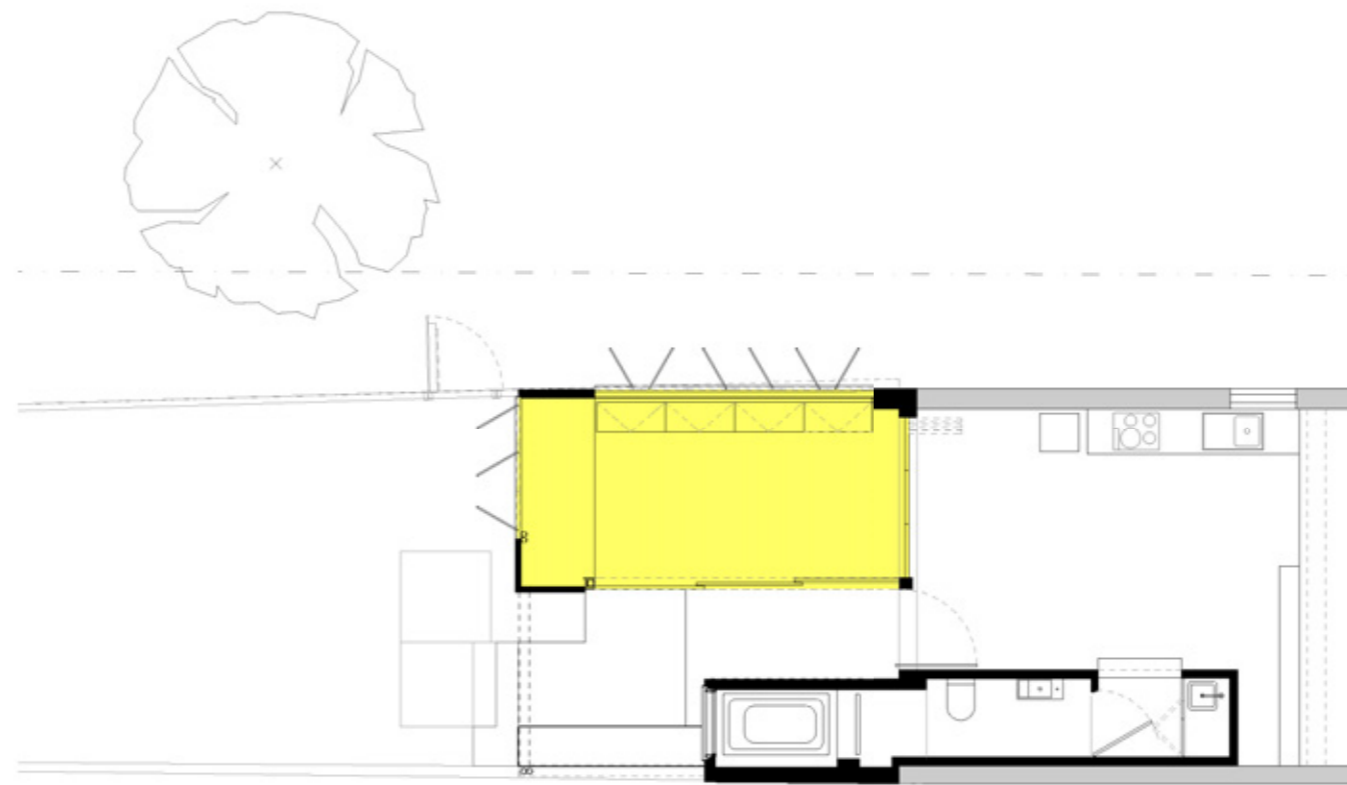
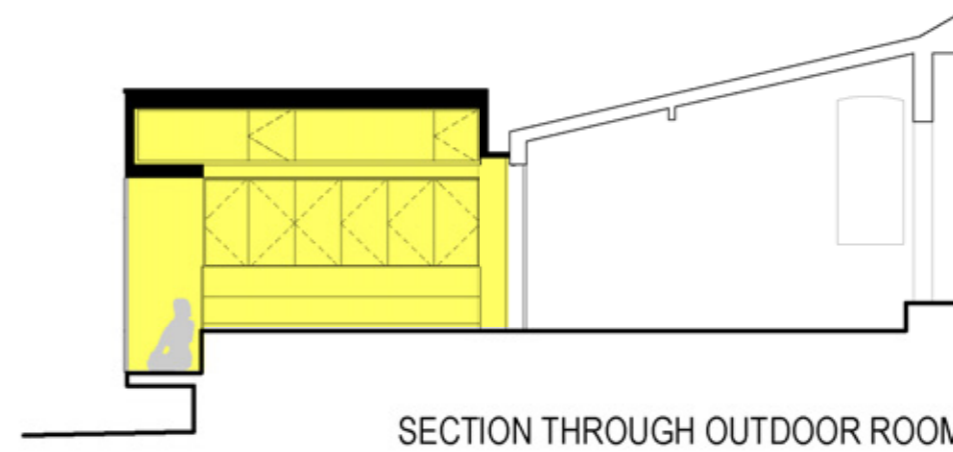


PRECEDENT

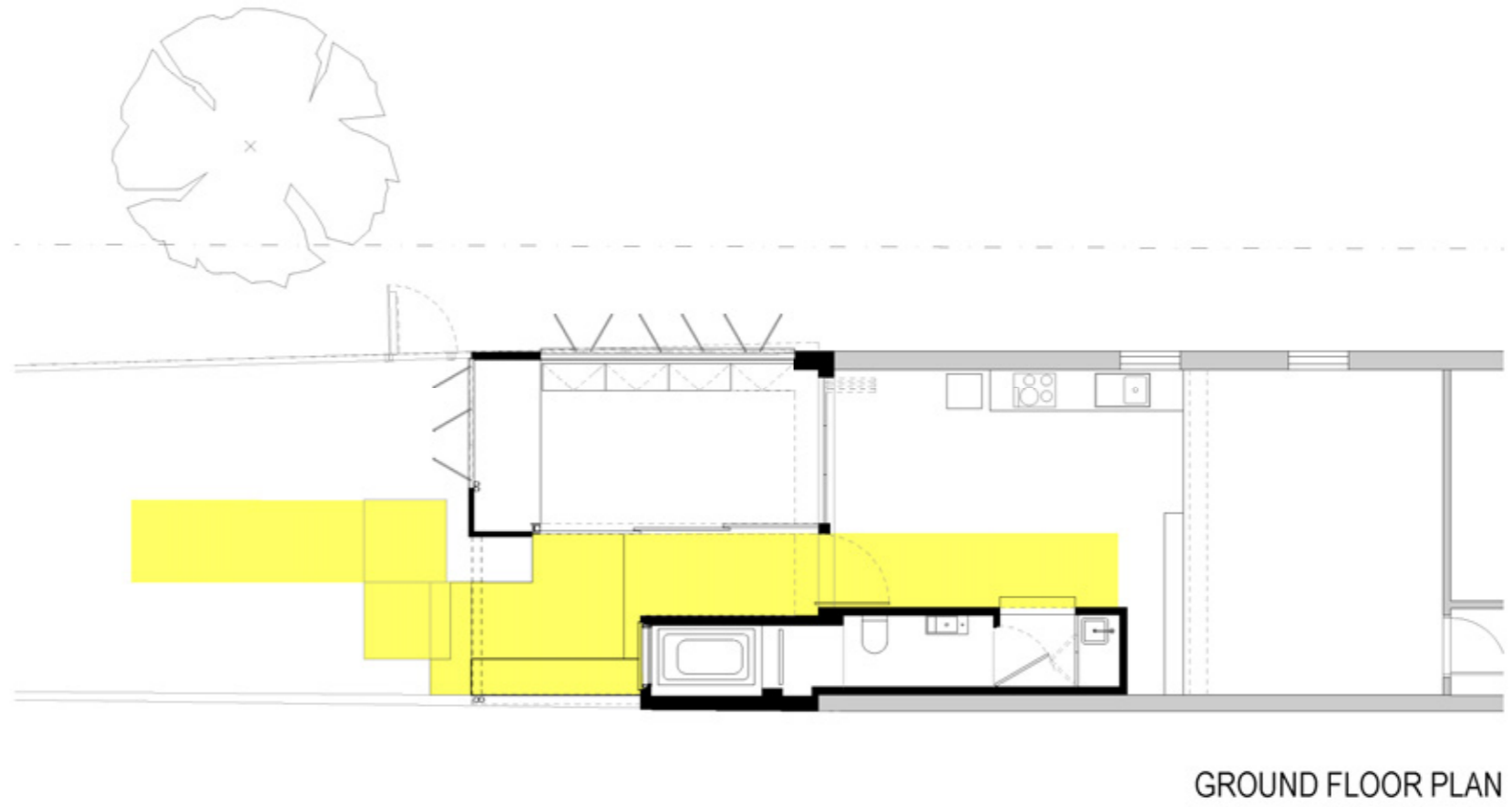
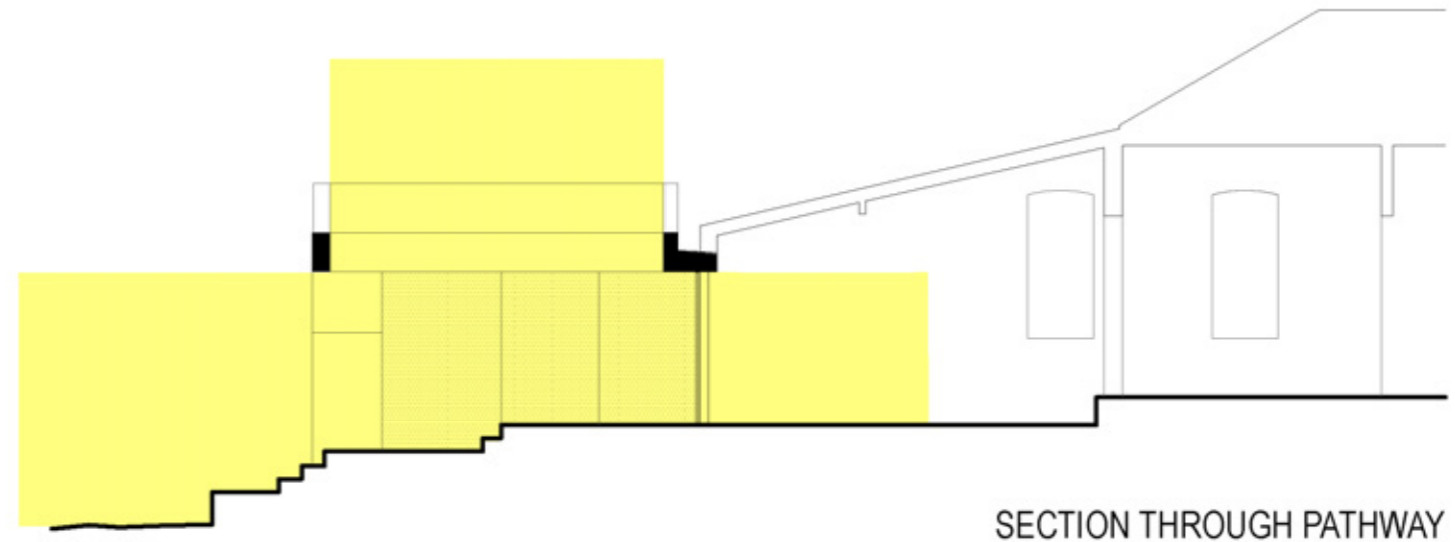
(architecture is always situated in a historical + contemporary context)



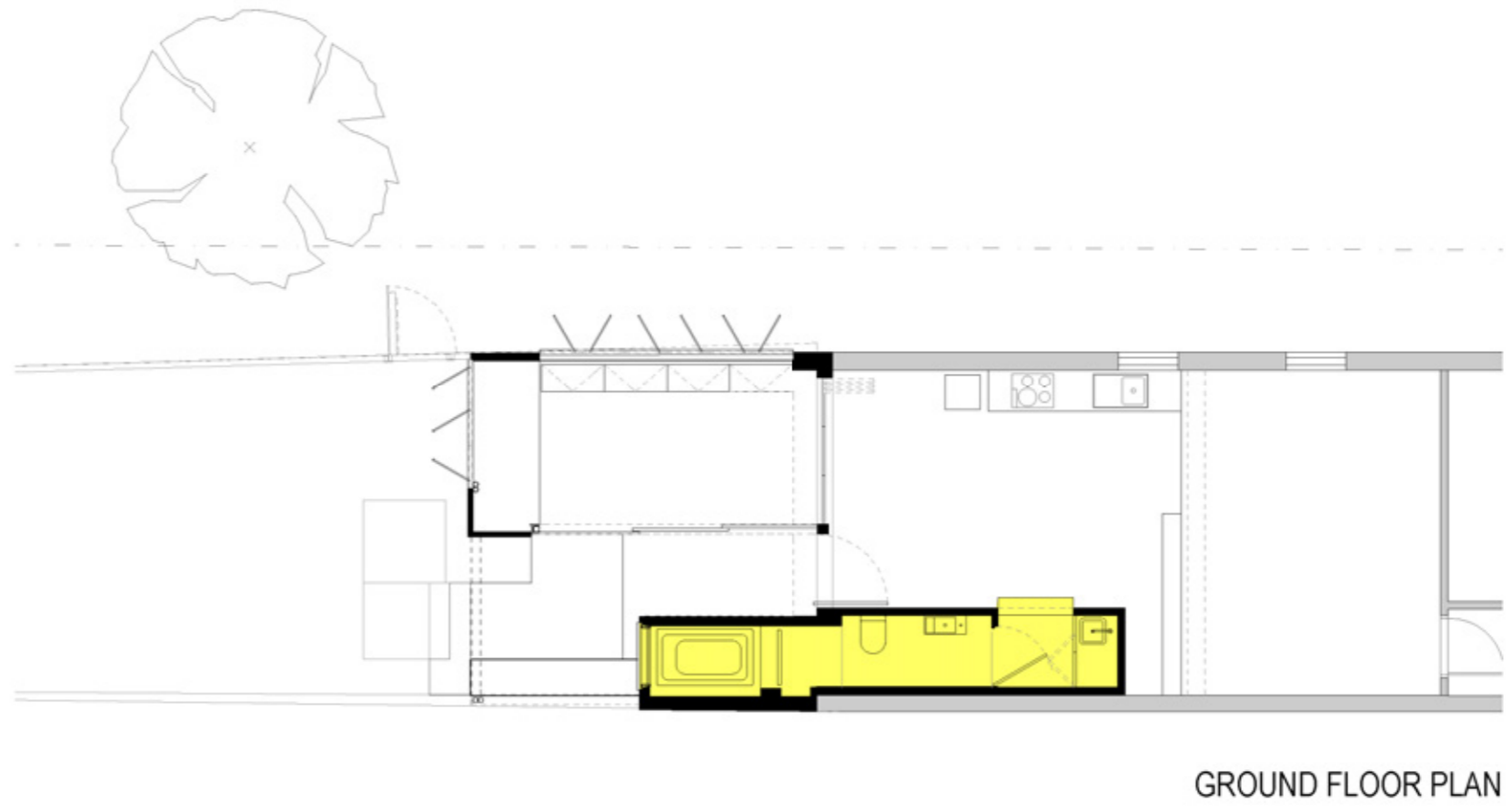
COMPONENT 1: outdoor dining room



COMPONENT 2: pathway

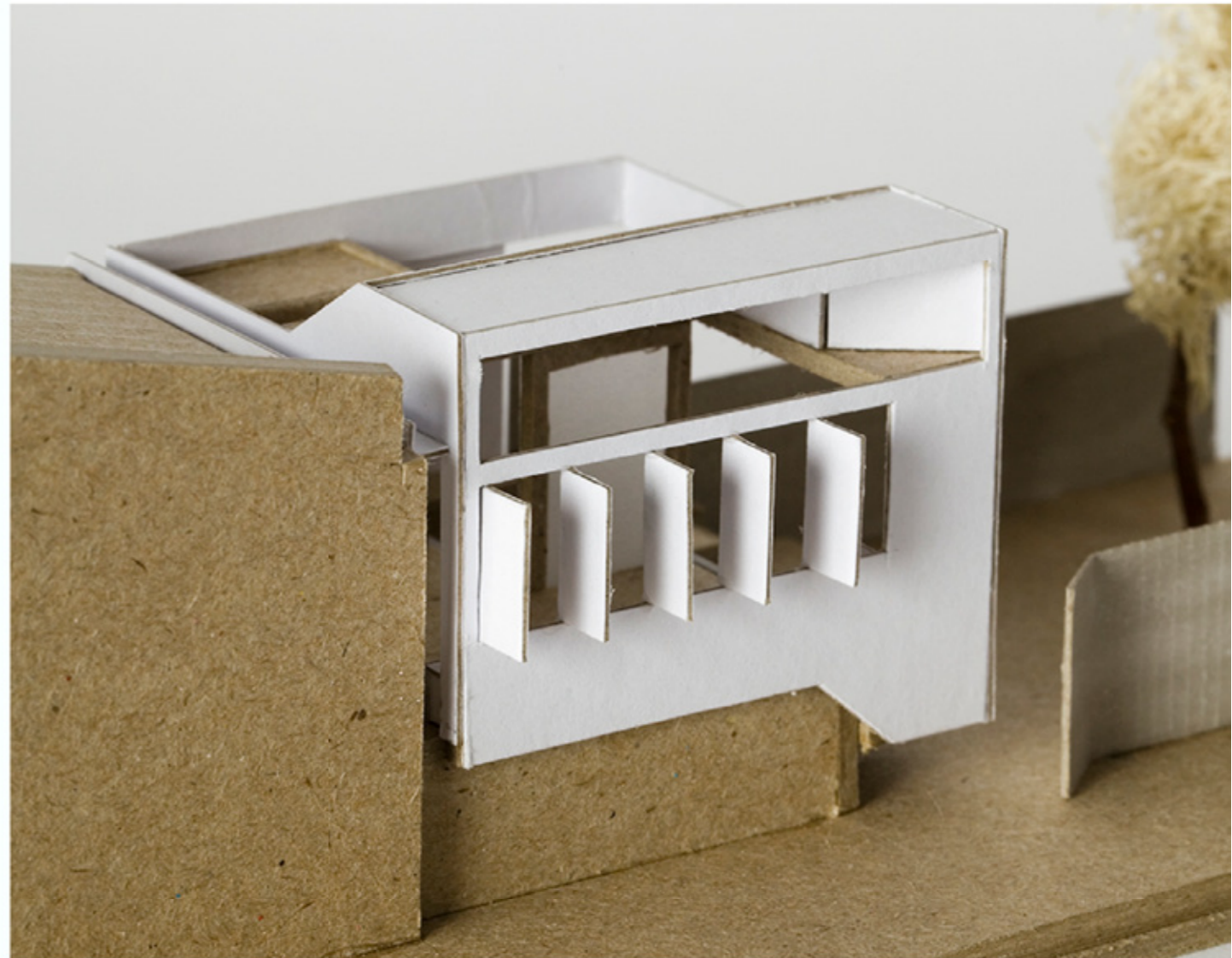


COMPONENT 3: bathroom

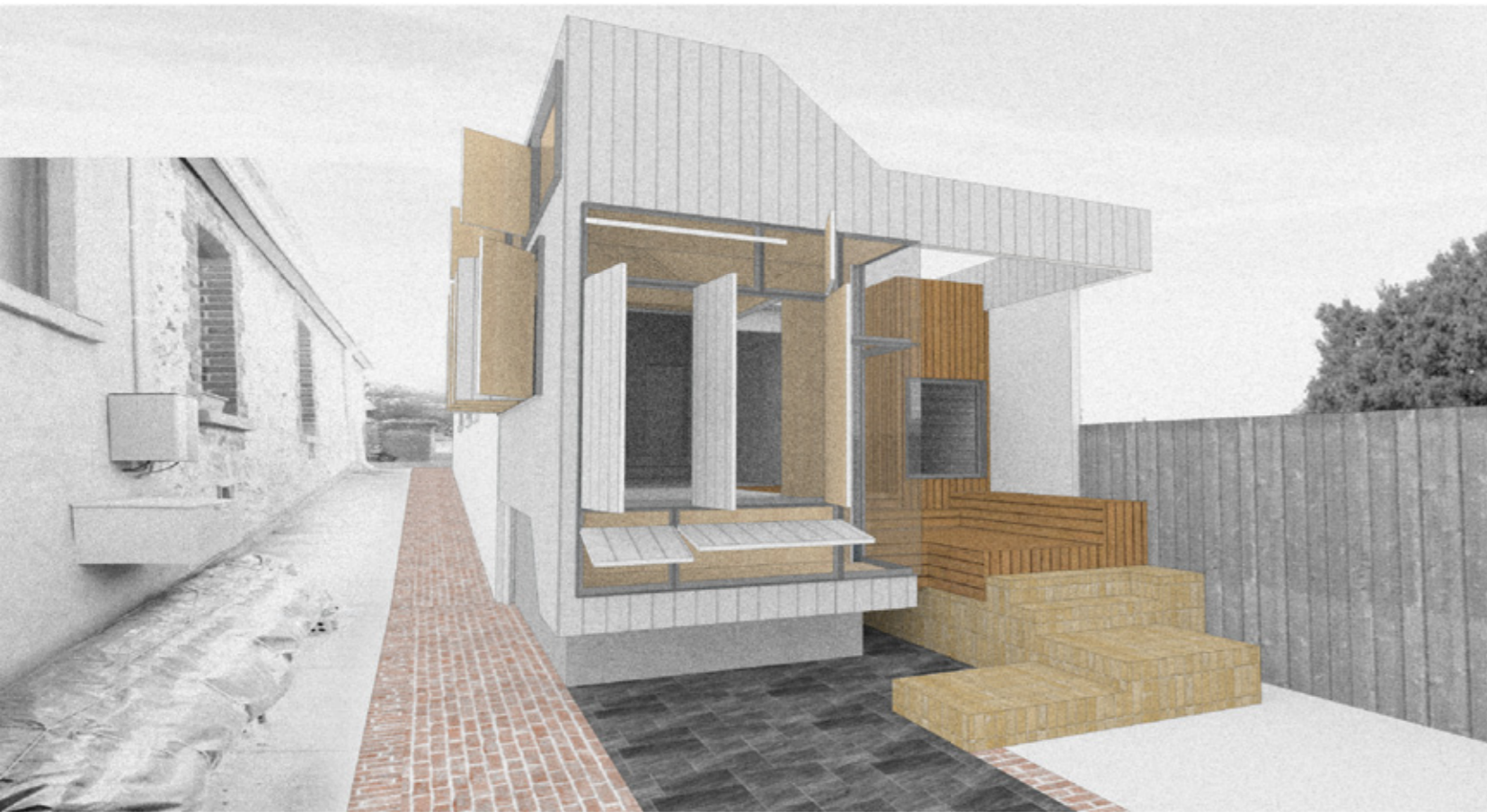


TESTING

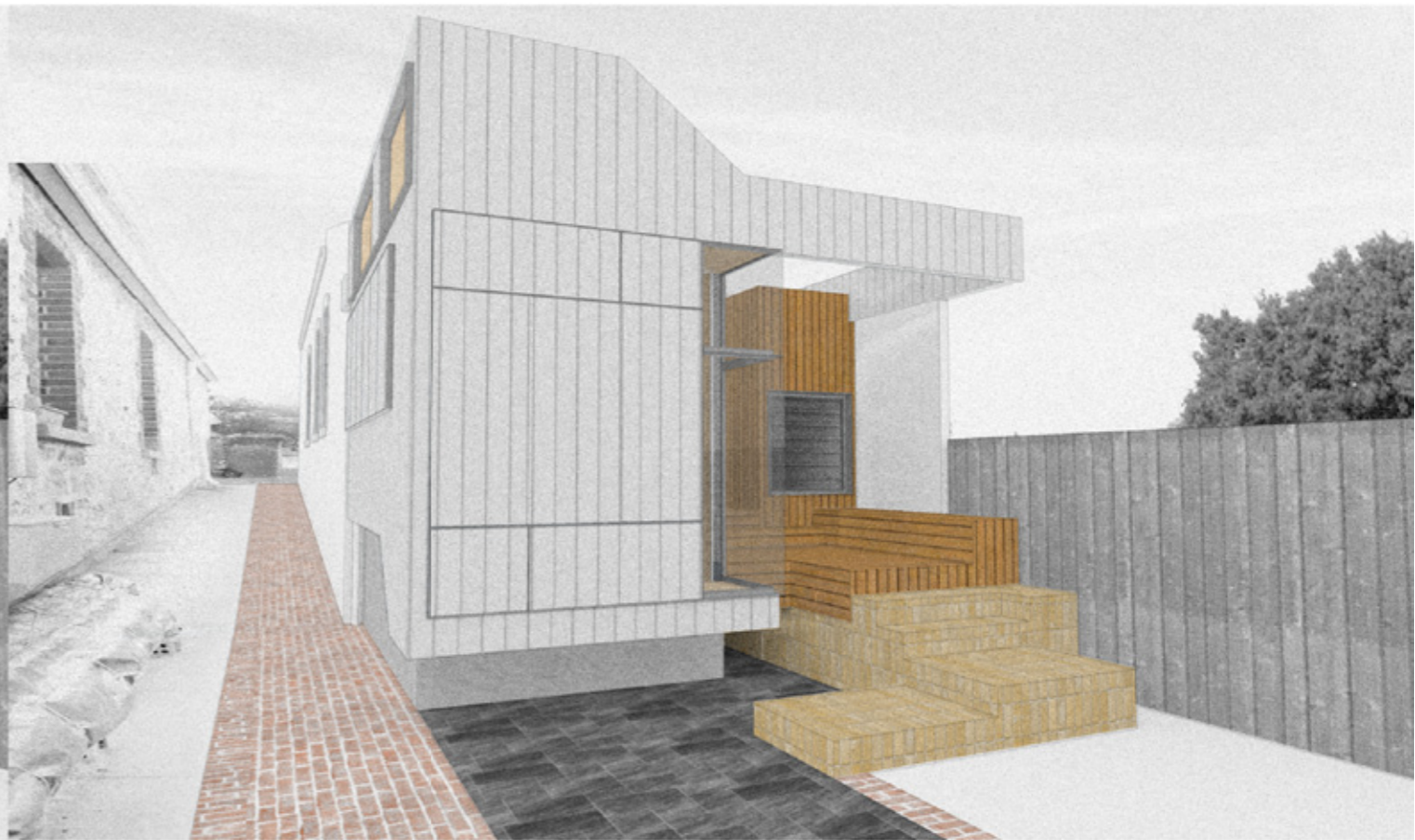
(cardboard model + sketchup)







open



closed

STUDENT ACTIVITY

(10 minutes)

TIMBER IN CONTEXT

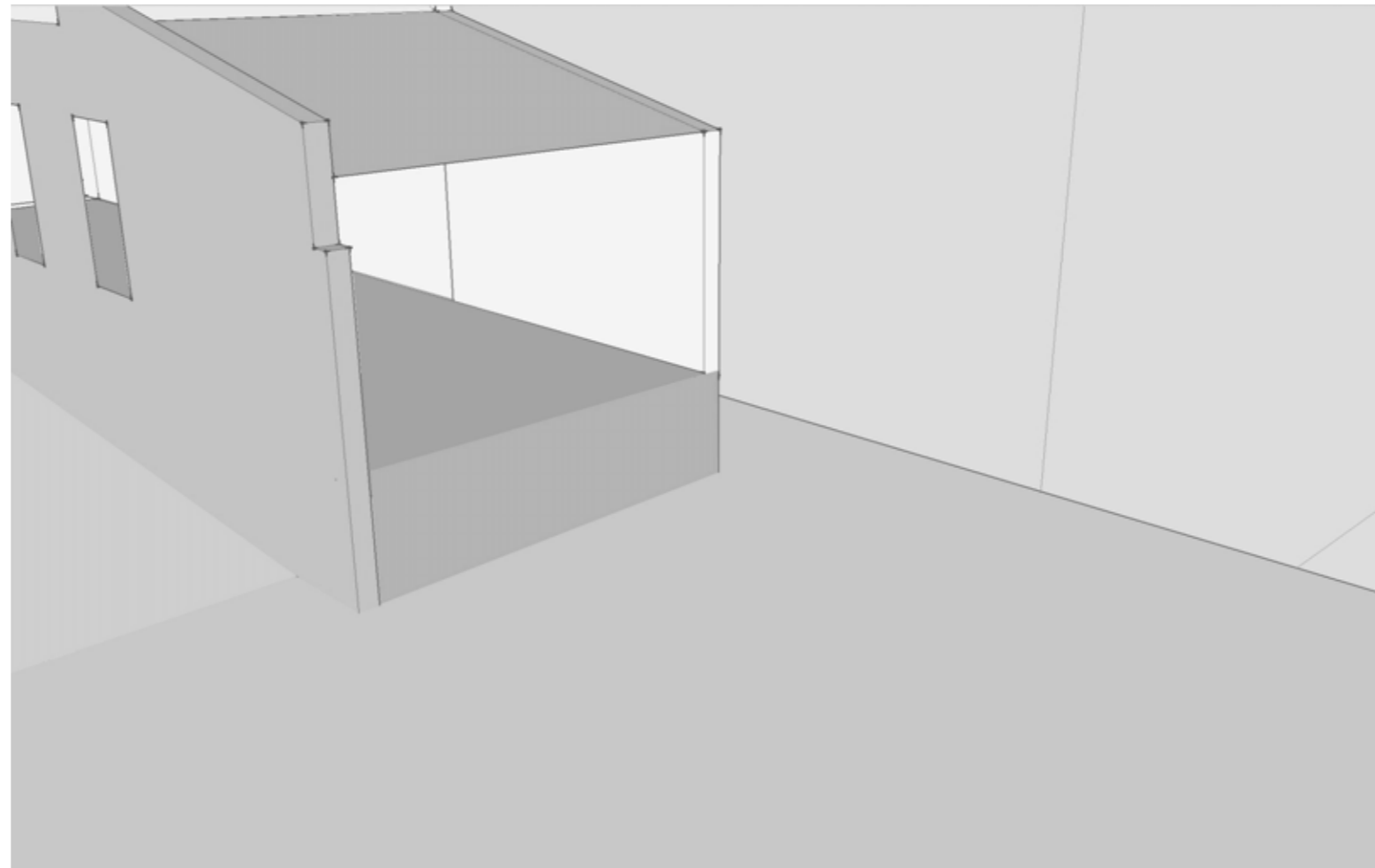
Sketch the components of 59 Bellevue Terrace.

Consider how timber interacts with other materials.

In what capacity does it act on this project?

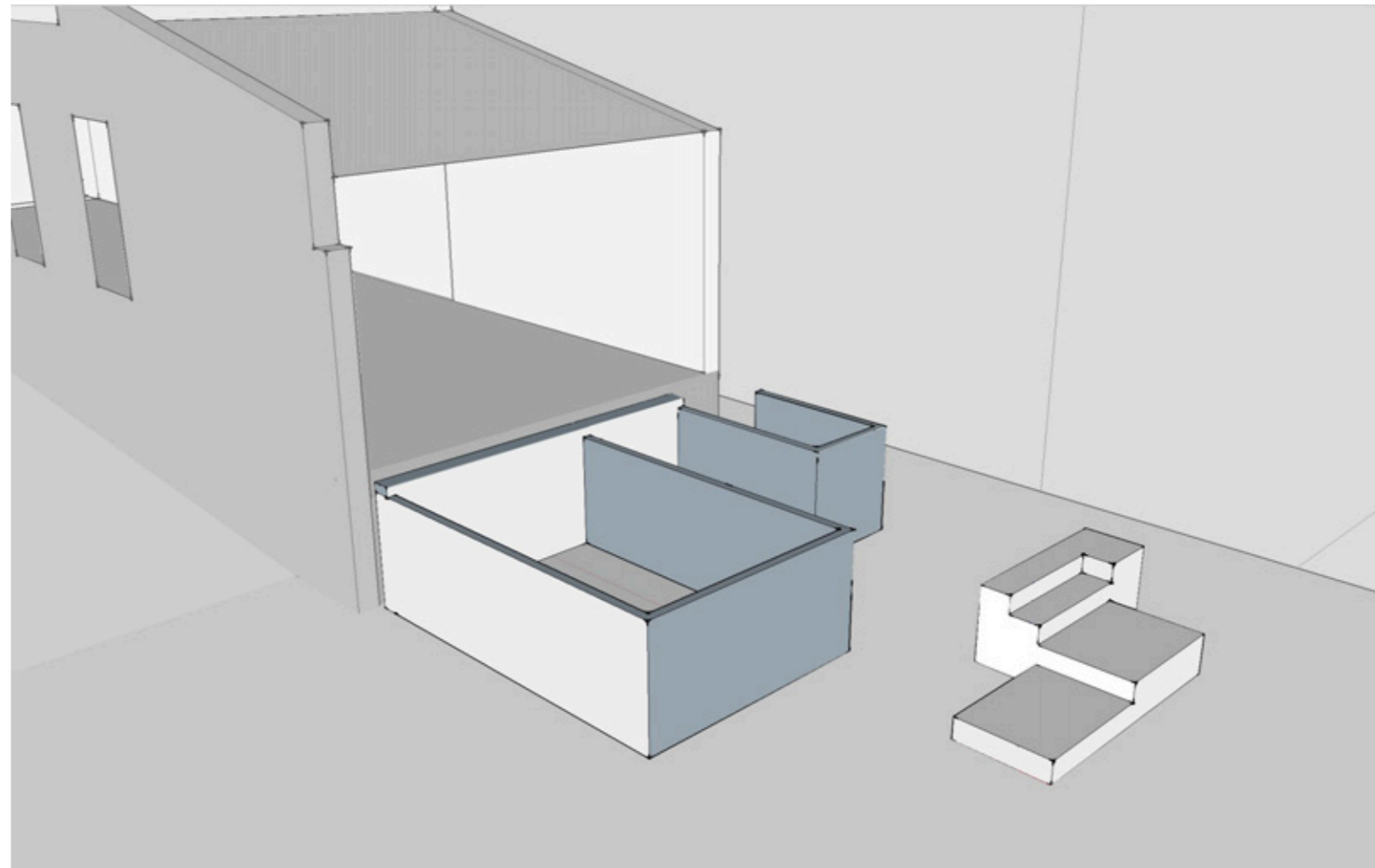
DISCUSSION

TIMBER IN CONTEXT



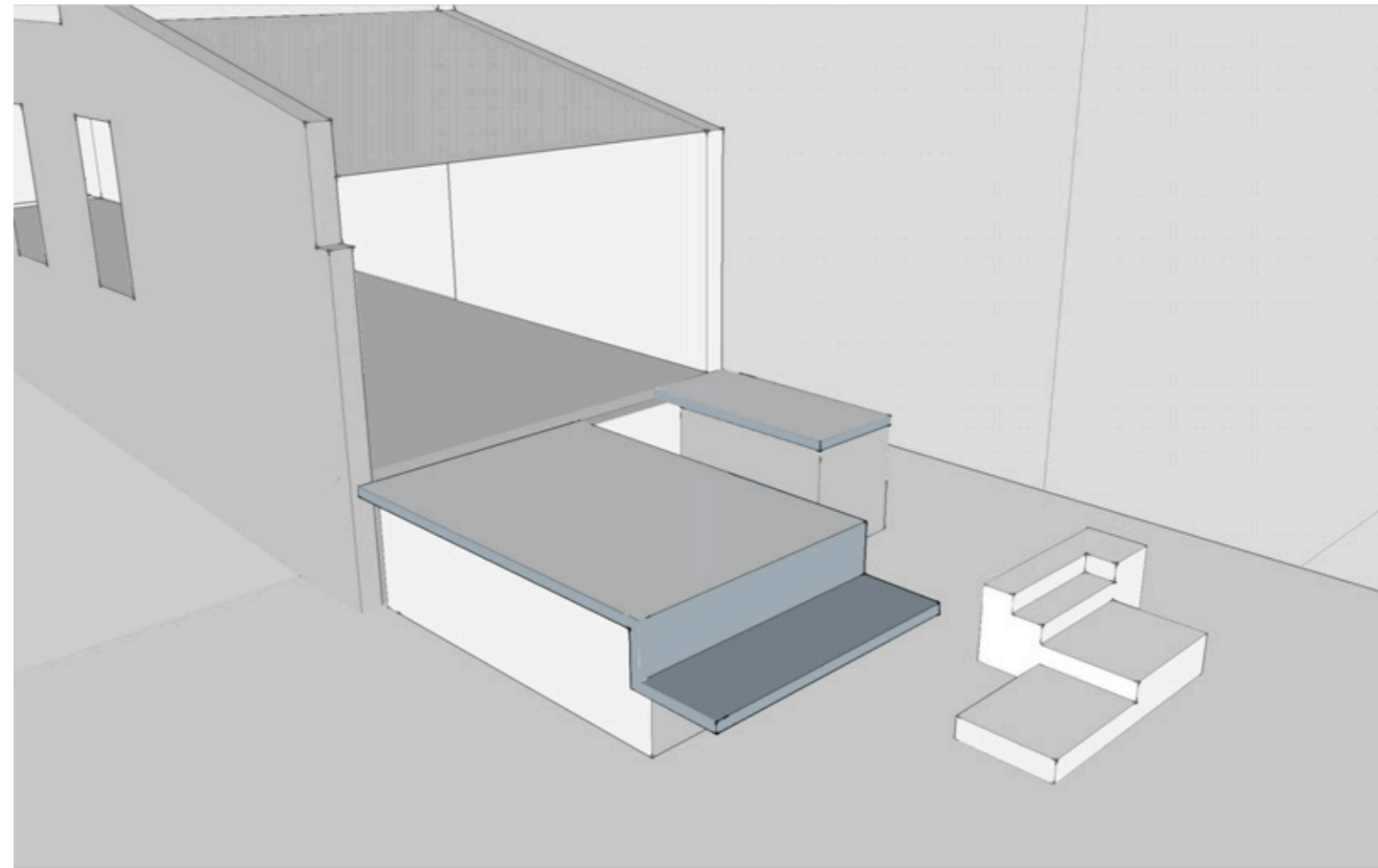
DISCUSSION

TIMBER IN CONTEXT



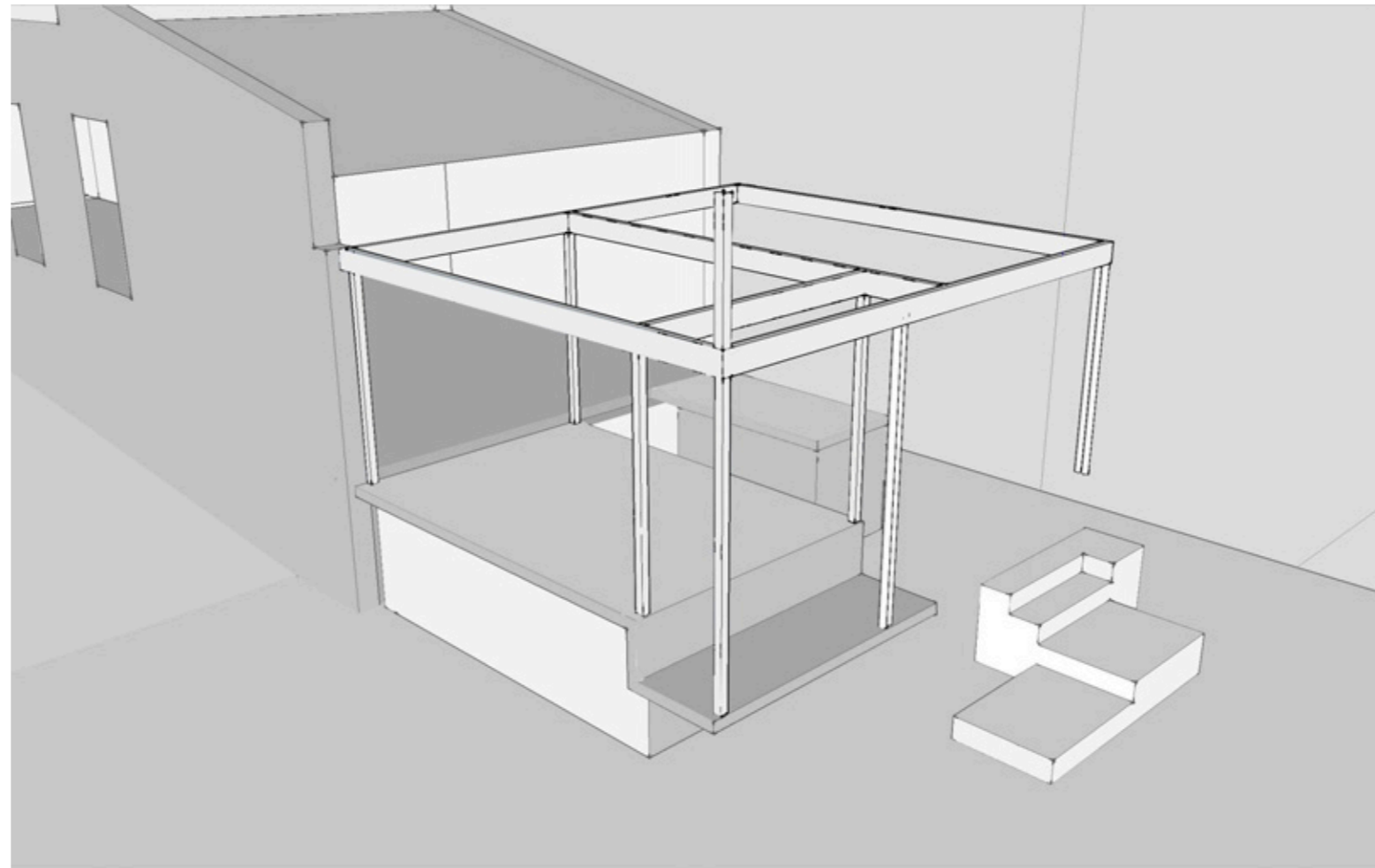
DISCUSSION

TIMBER IN CONTEXT



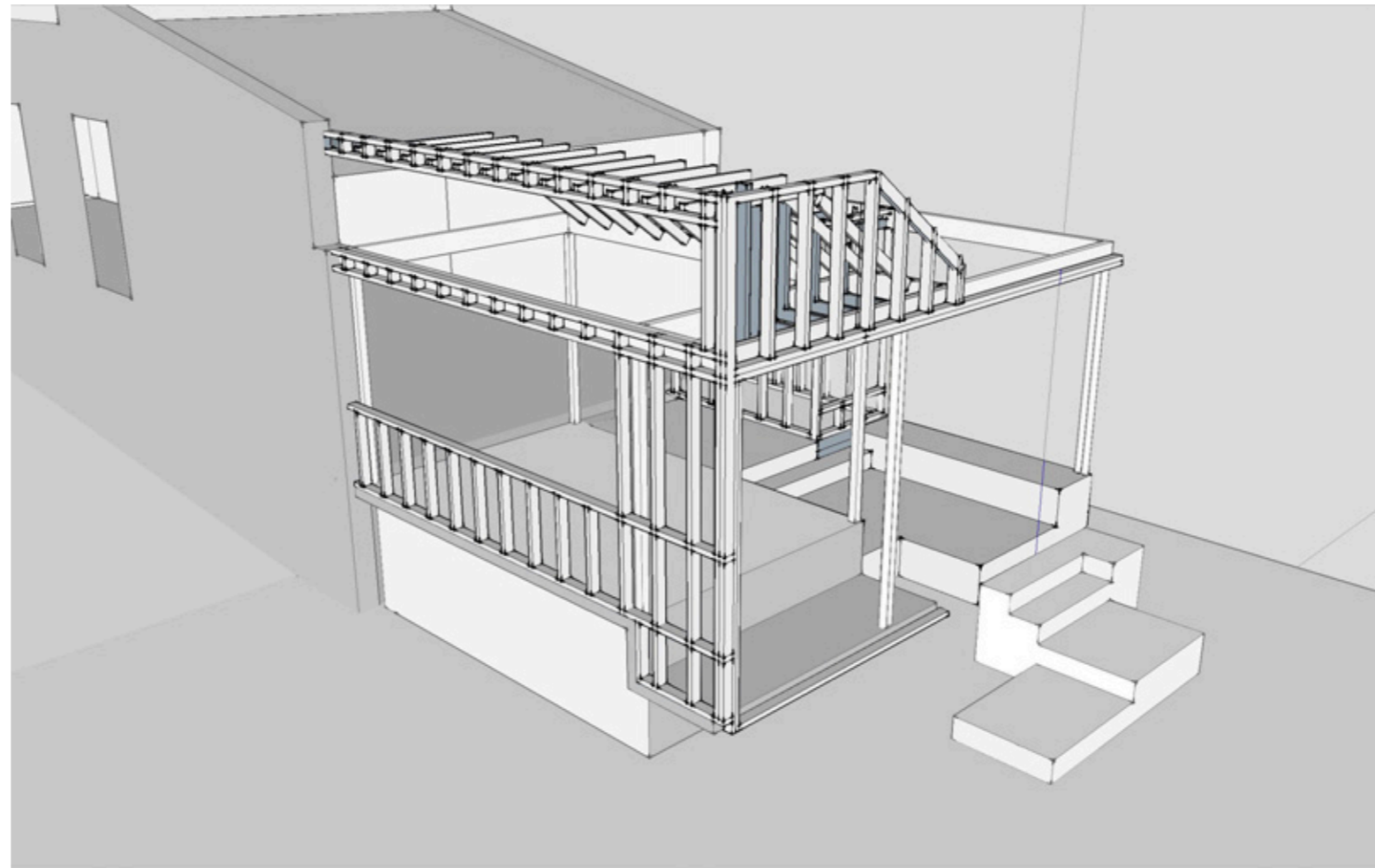
DISCUSSION

TIMBER IN CONTEXT



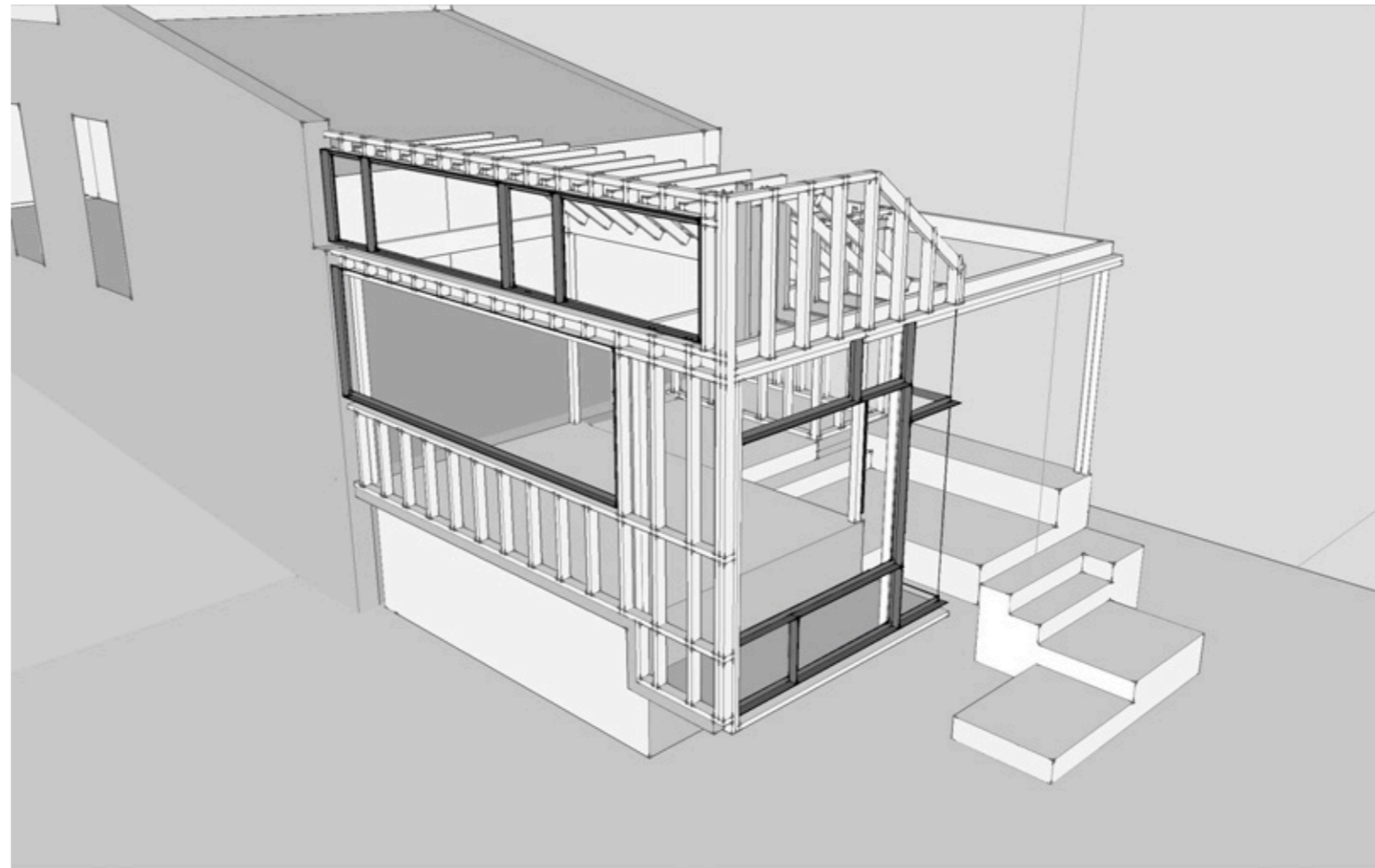
DISCUSSION

TIMBER IN CONTEXT



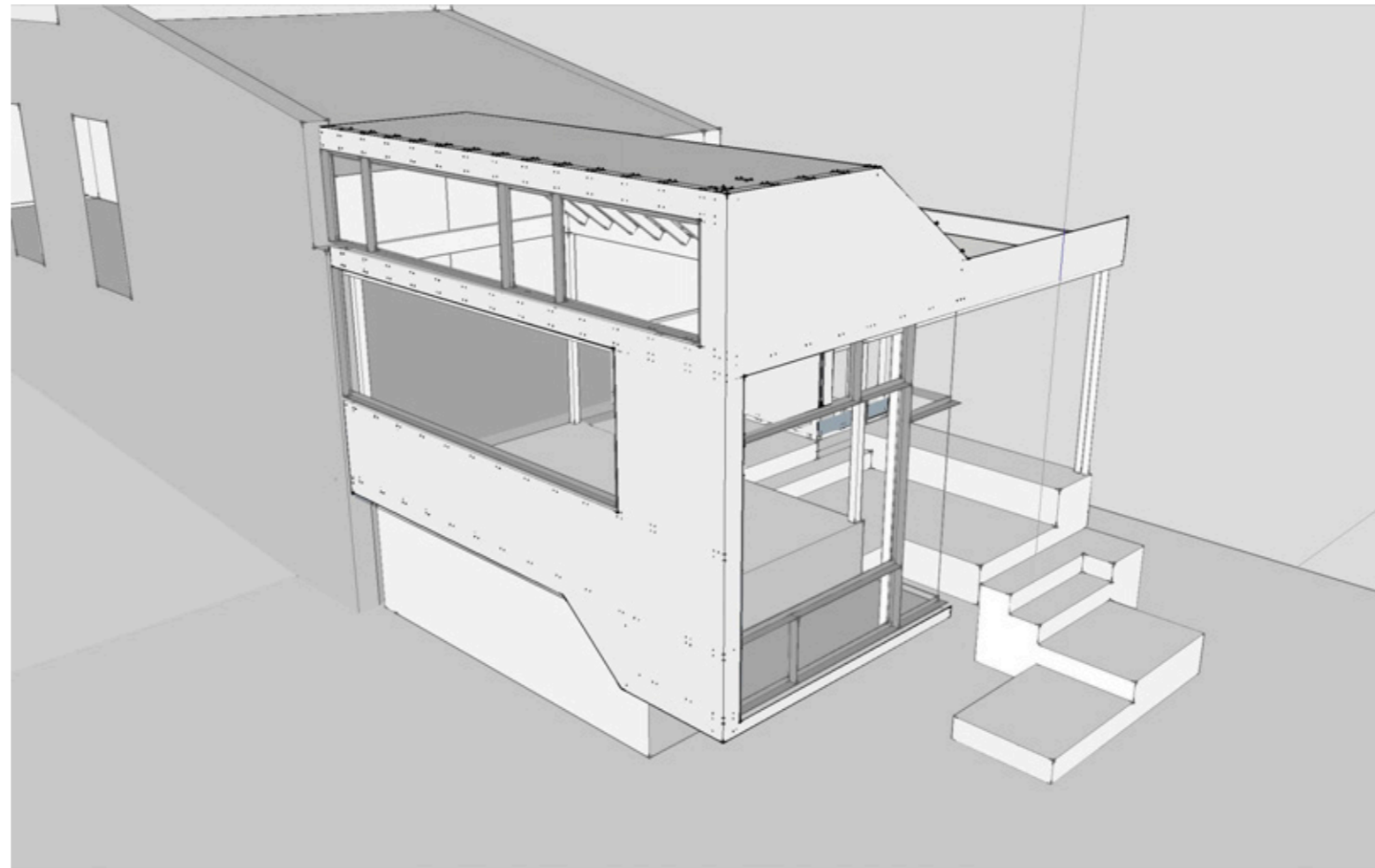
DISCUSSION

TIMBER IN CONTEXT



DISCUSSION

TIMBER IN CONTEXT



CONSTRUCTION

.....HOW THE THEORY TRANSLATES INTO PRACTICE

.....HOW THE PRACTICE INFORMS FUTURE THEORY

.....HOW ARCHITECTURE CONSISTS OF RELATIONSHIPS

.....OPPORTUNITIES OR COMPROMISE?







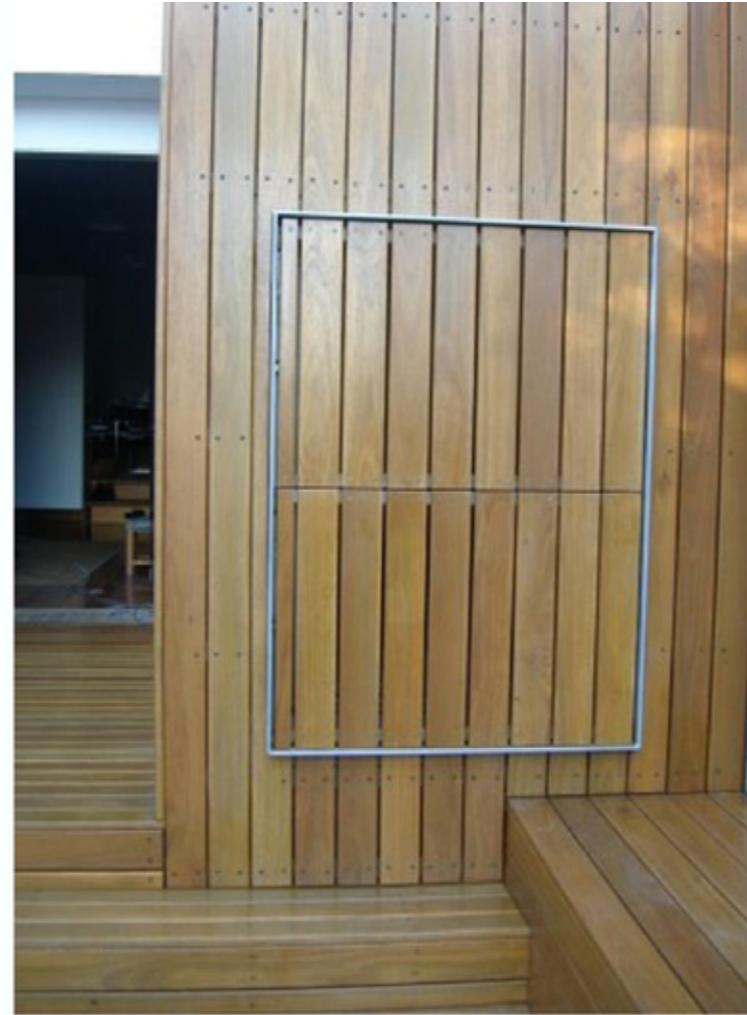


















SUMMER 2013

(snapshots upon completion....)





















SUMMER 2015

(snapshots year and a half on....)









Quote by Peter Zumthor:

“...I believe that the real core of all architectural work lies in the act of construction. At the point in time when concrete materials are assembled and erected, the architecture we have been looking for becomes part of the real world...”

Thinking Architecture, pgs 11, 12.

and again, Zumthor:

“...Practicing architecture is asking oneself questions, finding one's own answers with the help of the teacher, whittling down, finding solutions. Over and over again...”

Thinking Architecture, pg 57.

Good luck!

THANK YOU

(Open House, National Architecture Conference 2014)... the best part about being an architect is experiencing your work being inhabited.

