

CHANGING ECONOMIC LANDSCAPE

Economic globalization has a clear end goal: maximum trade and money flows for maximum profit. The adverse effects of this economic priority have become increasingly evident and include growing global inequality, job insecurity and adverse environmental effects [...]. There is now growing support for a radical alternative, that of localisation.

An increasing proportion of the working population is longer employed on a full-time basis. Part-time or casual employment is becoming increasingly prevalent. However, the cost of living continues to rise. As a result, more and more people are having to supplement their income in creative ways, often looking to self-employment to fill the gap.

Lang, T. and C. Hines, *The New Protectionism: protecting the future against free trade*. Earthscan, London, 1993

SMALL BUSINESS, POP-UP SHOPS, BACKYARD OPERATIONS, WORK FROM HOME, ETC.

THE FACE OF HOW WE WORK AND LIVE IS UNDERGOING FUNDAMENTAL CHANGE

SO...

THE BUILT ENVIRONMENT -- THE PHYSICAL INFRASTRUCTURE -- MUST ADAPT TO RESPOND AND SUPPORT THIS PARADIGM SHIFT

“SUBURBAN INFILL”

THE COMPETITION BRIEF:

- + 2 DWELLINGS PER BATTLE AXE LOT
- + 14 DWELLINGS FOR HILTON
- + 14 TO 21 ADDITIONAL CARS
- + 6 TO 10 ADDITIONAL PETS
- = INCREASED RESIDENTIAL DENSITY
- = MORE PLACES TO LIVE
- = BETTER QUALITY OF LIFE ??
- = SUSTAINABLE SOLUTION ??

SO, WE LIVE HERE BUT WHERE DO WE WORK?

WE CAN'T GET A FULL-TIME JOB AND ARE FORCED TO BE CREATIVE WITH OUR SPARE TIME TO GENERATE SUPPLEMENTARY INCOME.

WE MAKE, WE OFFER, WE SHARE, WE SWAP, WE BECOME ENTREPRENEURS...

BUT THE SPARE BEDROOM OR GARAGE DOES NOT ALLOW US TO THRIVE...

NOR DOES OUR ISOLATION.



MAYBE THERE IS AN OPPORTUNITY TO DO MORE

WHAT IF PUBLIC HOUSING PROVISION IS REDEFINED TO PROVIDE MORE THAN JUST SHELTER?

WHAT IF ITS MANDATE BECAME THE PROVISION OF LIFE OPPORTUNITY? THE PROVISION OF A PHYSICAL ARMATURE THAT NURTURES + FACILITATES A NEW START?

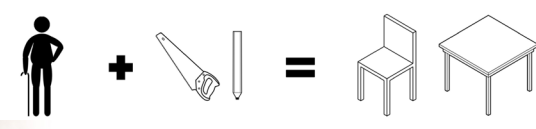
A HOME THAT IS EQUIPPED TO ENABLE ....



A FAMILY OF 4  
STAY AT HOME DAD  
2 KIDS UNDER AGE OF 5  
SPARE TIME, LOVES CHAOS

SAYS 'YES' TO LOOKING AFTER NEIGHBOURS' KIDS FIRST 1, THEN 2, THEN 10 TO ESTABLISH A NEIGHBOURHOOD CRECHE WITH LOTS OF SPACE FOR:

- INDOOR + OUTDOOR PROTECTED PLAY AREAS
- FOOD PREPARATION
- WASHROOM FACILITIES



A SINGLE MAN IN HIS 60's  
RETIRED  
LOVES MAKING THINGS  
ENJOYS PEOPLE

TO PURSUE HIS LOVE OF WOODWORK BY OFFERING A COMMUNITY WORKSHOP WHERE HE:

- MAKES THINGS FOR SALE
- RUNS CLASSES
- HIRES OUT SPACE / TOOLS



A COUPLE IN THEIR 20's PART TIME JOBS  
LOVE FOOD  
LOVE TO SHARE IT

THEM TO SUPPLEMENT INCOME BY ENABLING THEM TO ESTABLISH A COMMUNITY FOOD TRUCK SERVICE WITH ROOM AT HOME FOR:

- THE TRUCK + SERVICING
- A COMMERCIAL KITCHEN
- A FEW TABLES FOR GUEST TO DINE

A SUBURB THAT IS GIVEN LIFE BY ACUPUNCTURE

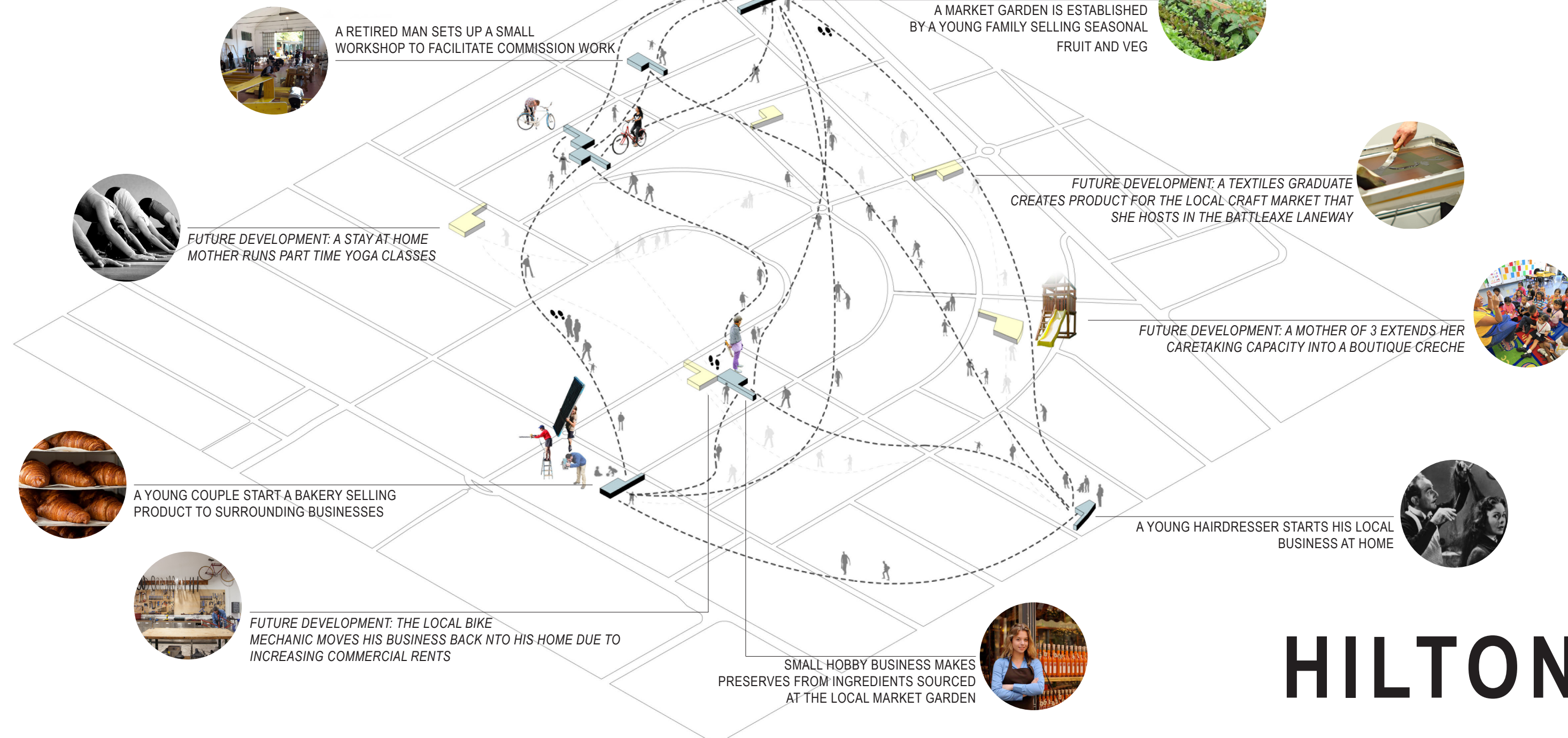
NO LONGER A MONO-ZONE OF SINGLE RESIDENTIAL THROUGH THE INSERTION OF DIVERSE MICRO-INDUSTRIES ON PUBLIC HOUSING LOTS THROUGHOUT THE SUBURB.

WHERE PREVIOUSLY RESIDENTS GOT IN A CAR TO SHOP, WORK, VISIT FRIENDS -- DO ALMOST ANYTHING -- A NEW THRIVING LOCAL COMMUNITY REAWAKENS SUBURBAN ROADS WITH THE PEDESTRIAN BUSTLE OF RESIDENTS (AND VISITORS) MOVING BETWEEN MICRO-INDUSTRIES, DOING SHOPPING, WORKING ON A PROJECT, DROPPING OFF KIDS, GRABBING A COFFEE.

- SELF SUFFICIENT
- SUSTAINABLE
- SAFER
- WALKABLE
- DIVERSE COMMUNE
- INTERDEPENDENT
- NIMBLE

BUT HOW DO YOU DESIGN FOR THAT?

YOU NEED A ....



HILTON

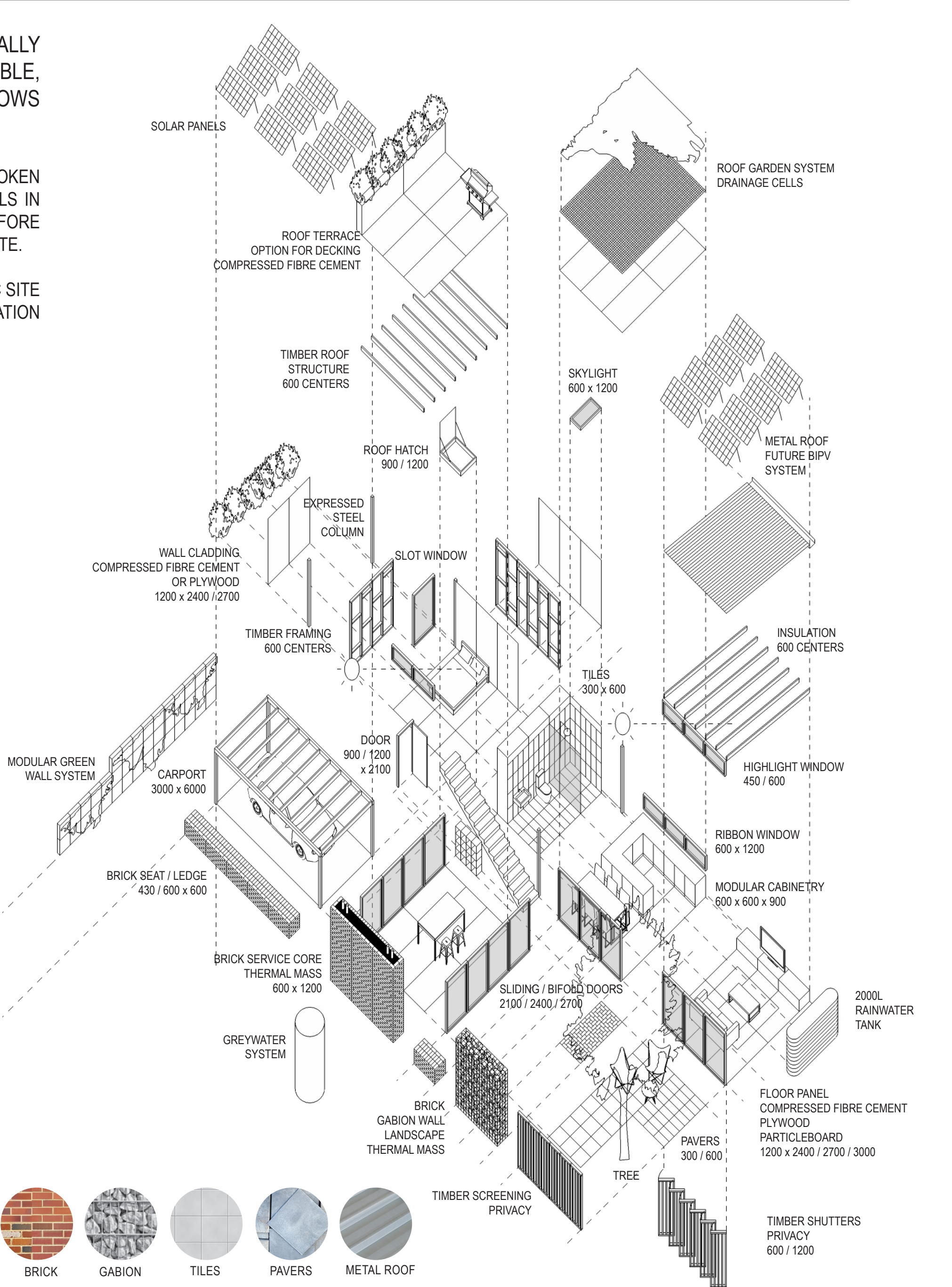
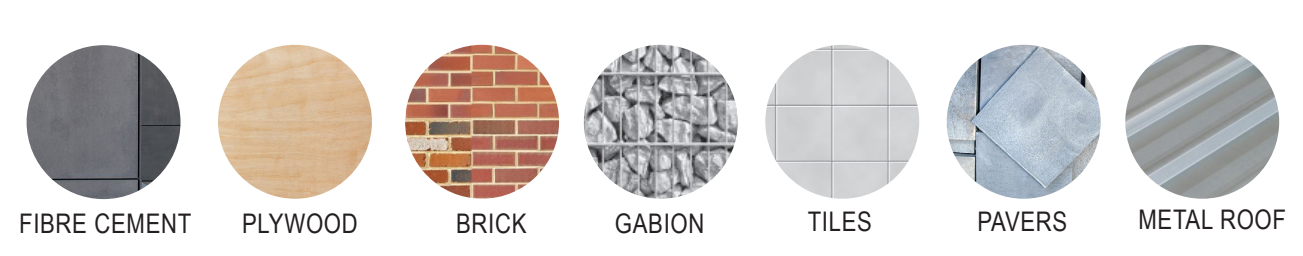
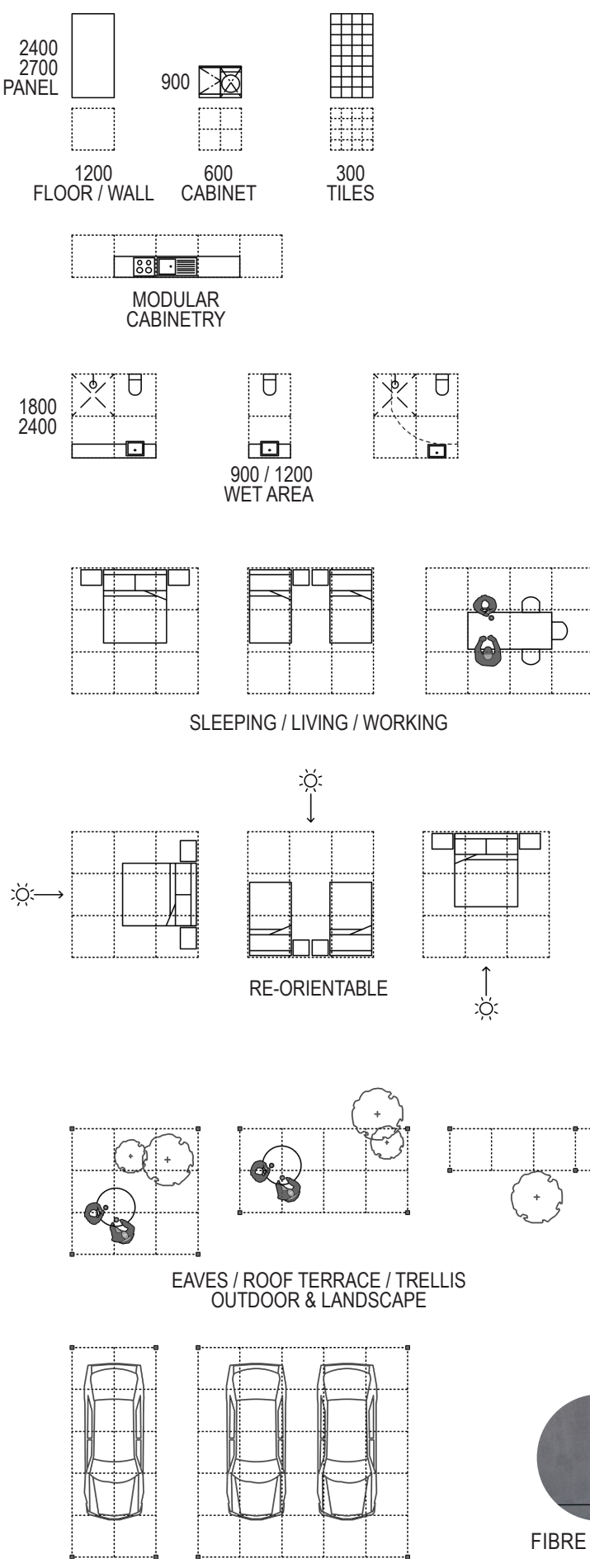
A. BUILDING BLOCK

APRE-DESIGNEDKITOFMODULARPARTS, INTRINSICALLY FLEXIBLE, ADAPTABLE, AFFORDABLE, REPEATABLE, NEGATES WASTE, SUPPORTS CHANGE, ALLOWS PERSONALISATION.

TO DESIGN ACROSS MUTIPULE SITES THE STRUCTURE IS BROKEN INTO A SIMPLE KIT OF PARTS. EACH MATERIAL USING PANELS IN SIZES OF 300, 600, 900, 1200, 2100, 2400, 2700, 3000. THEREFORE REDUCING WASTE AND THE NUMBER OF TRADE HOURS ON SITE.

THE COMPLING OF PARTS CAN BE TAILORED TO THE SPECIFIC SITE CONDITIONS, THE PLACEMENT OF TREES SERVICES, ORIENTATION AND BREEZES.

GRID SIZE



B. PROCESS

TO FACILITATE AN OUTCOME THAT IS NOT GENERIC, BUT ADAPTED TO THE INDIVIDUALS BEING HOUSED; THEIR ASPIRATIONS, CIRCUMSTANCE; TAILORED TO ENABLE THEM TO PURSUE A DREAM, A WAY OF SUPPLEMENTING INCOME THAT REDUCES DEPENDENCE ON WELFARE; EMPOWERS AND FACILITATES;



THE DEPARTMENT OF COMMUNITIES | HOUSING AS AGENT OF A DELIBERATIVE PROCESS

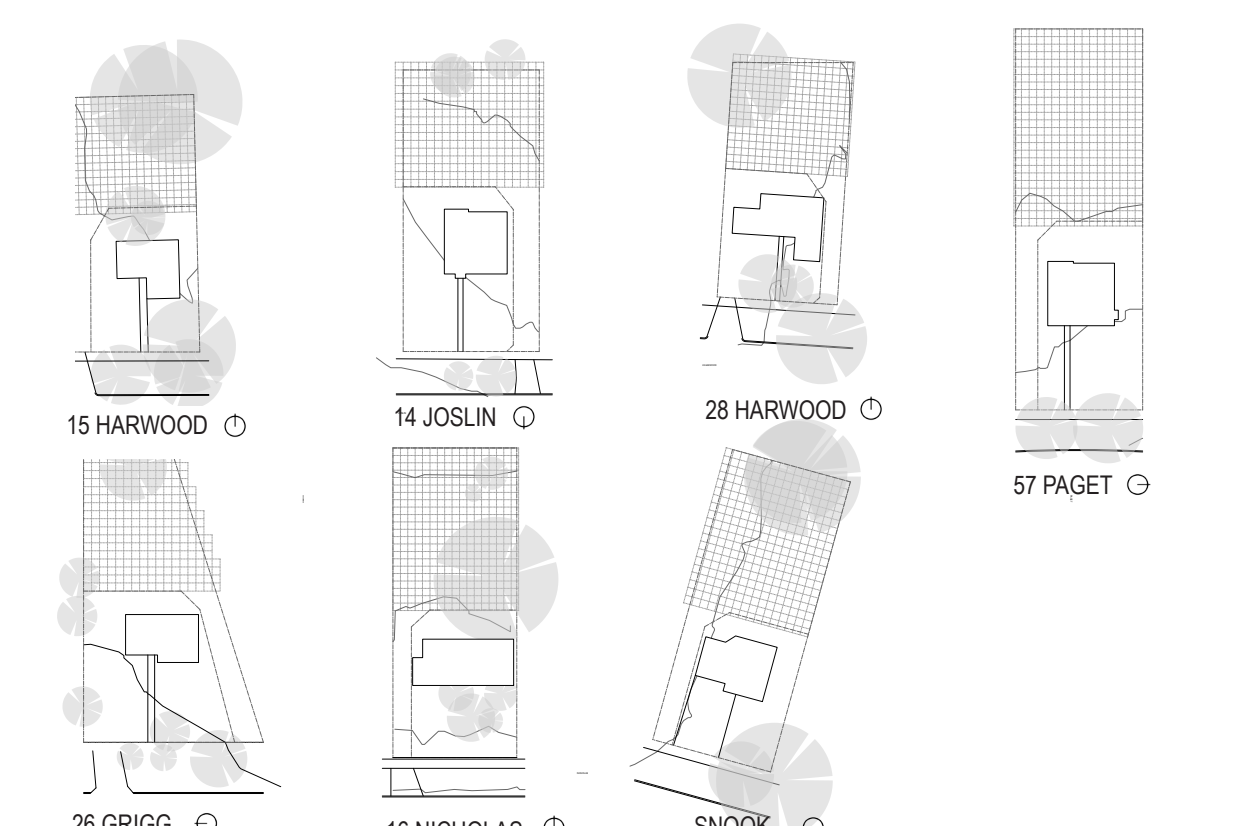
NOT GENERIC HOUSING, BUT HOUSING SOLUTIONS THAT OFFER MORE TO SPECIFIC INDIVIDUALS WHO ARE OFFERED INVOLVEMENT IN THE DESIGN OF THEIR BUILDING THROUGH A DELIBERATIVE PROCESS.

A PROCESS THAT TAKES INTO ACCOUNT PERSONAL ASPIRATIONS GIVES THEM A SPATIAL 'ALLY'

A FLEXIBLE YET PURPOSEFUL SERIES OF SPACES TAILORED TO A PARTICULAR ENTREPRENEURIAL BENT

WITH AN ADDITIONAL MANIFESTO: TO ALLOCATE ASPIRATIONS TO AVAILABLE SITES THAT ARE COMPLEMENTARY TO ONE ANOTHER, WHICH -- OVER TIME -- WILL...

TRANSFORM A PURELY RESIDENTIAL SUBURB INTO A VIBRANT TAPESTRY OF MICRO-INDUSTRIES, COMMUNITY, RESIDENCES, DEMOGRAPHICS, AGES, THAT IS WALKABLE, SUSTAINABLE, DIVERSE.



GRID OVERLAID, READY FOR THE NEXT JOURNEY... REGISTRATION NUMBER HDC095